

1-877-903-7246

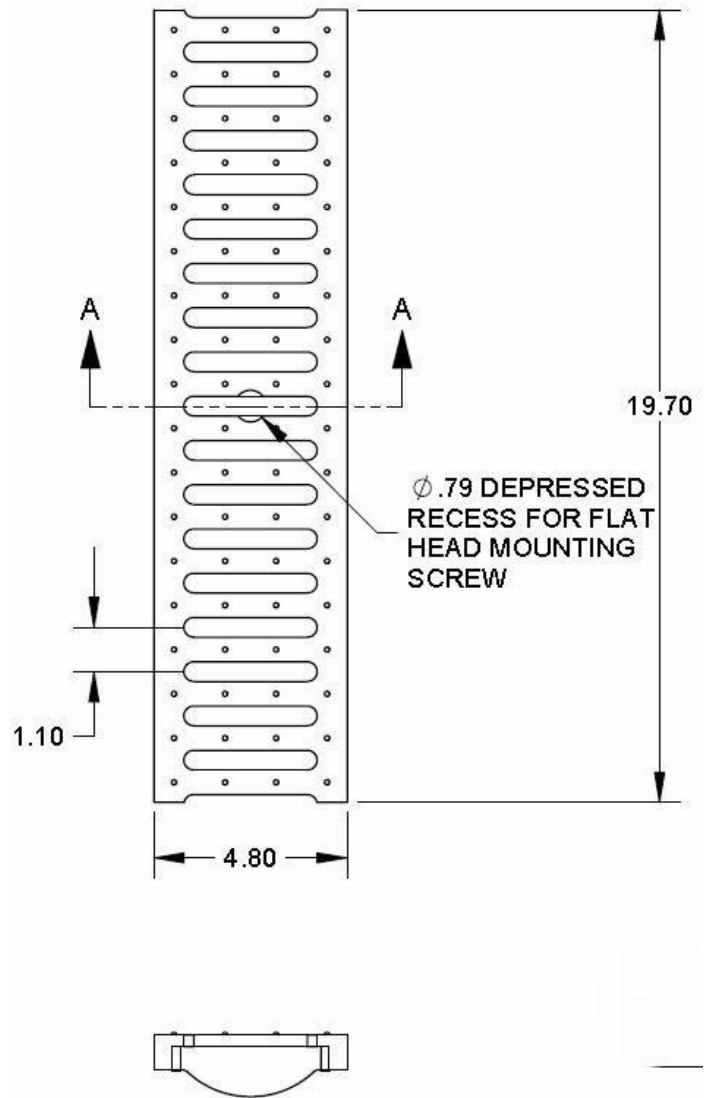


www.trenchdrainsupply.com

<p><b>Number</b></p> <p style="text-align: center;"><b>152611</b></p>	<p><b>Series</b></p> <p style="text-align: center;"><b>152611</b></p> <p style="text-align: center;">E Ductile Iron Slotted 1000 Series Grates</p>
---	--



FREE AREA: 28 SQ. IN. PER 1/2M GRATE SECTION



**Manufacturer**



Quality engineered trench drain system

**Specification**

MEA 152611 DUCTILE IRON TRENCH DRAIN GRATE WITH AVAILABLE LOCKING BAR SECURING FEATURE AND CLASS E LOAD RATING (135,000 LBS - 2,788 PSI), SUPPLIED BY TRENCH DRAIN SUPPLY.

DISCLAIMER - The customer and the customer's architects, engineers, consultants, and other professionals are completely responsible for the selection installation and maintenance of any product purchased from Trench Drain Supply and/or its manufacturers. TRENCH DRAIN SUPPLY MAKES NO WARRANTY, EXPRESS OR IMPLIED, AS TO THE SUITABILITY, DESIGN, MERCHANTABILITY, OR FITNESS OF THE PRODUCT FOR CUSTOMERS APPLICATION. The drawing and information provided remain the property and copyright of the manufacturer listed. The manufacturer reserves the right to modify specification without notice.